 **INSTRUCTIONS ON HOW TO CREATE A CORRECT FILE FOR MOUSEPADS AND PVC COASTERS**
The following instructions are designed to help you create a proper printing file. If still in doubt, please visit our web site at the FAQ section, activate the File Verification with an operator or call our Support Service.

1 FILE FORMAT

Our systems only process PDF format files - not password protected.

2 FORMAT ORIENTATION

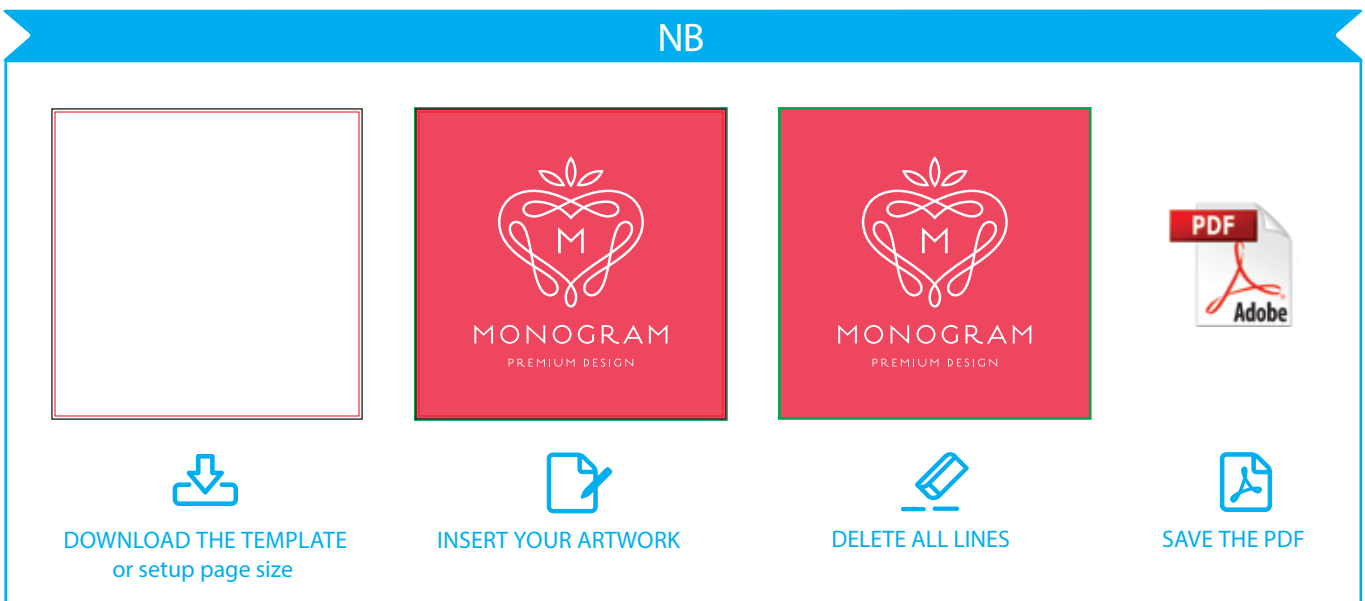
File format orientation must match the choice indicated at the time of the order - portrait or landscape.

3 TEMPLATE

Download template file if one is available.

We recommend to set page size file in 1:1 proportion, add your own graphic, and save it in PDF. Be careful not to place graphics in the bleed area, as they will not show on the finished product.

NB



DOWNLOAD THE TEMPLATE
or setup page size

INSERT YOUR ARTWORK

DELETE ALL LINES

SAVE THE PDF

4 COLOUR

The same colour can appear slightly different depending on the printing media. This is due to the material physical composition. All the colours are in CMYK (Cyan, Magenta, Yellow and Black) with embedded printing profile. Images in RGB or with PANTONE colours will be automatically converted with the standard separation profile.

5 RESOLUTION

The best resolution for the printing file is between 150 and 200 dpi.

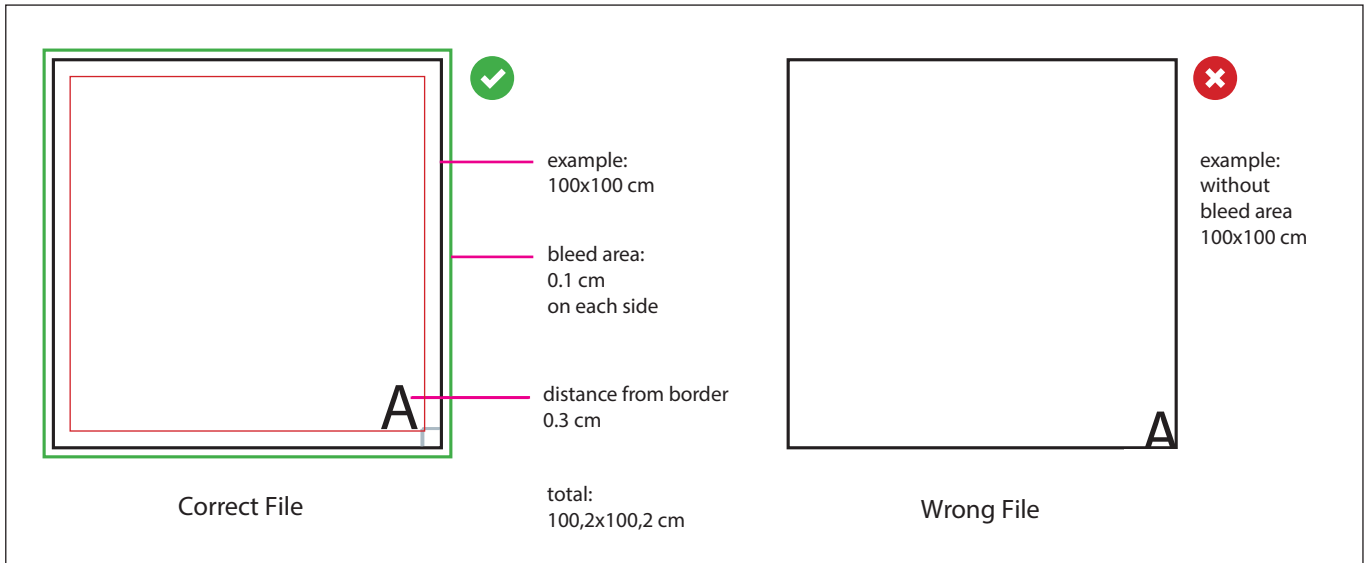
6 ADDITIONAL INFORMATION

The minimum printable line width is 0.5 pt. The minimum printable font size is 12 pt.

We advise against positioning frames and mounts along the edges, as this may cause irregular cutting around the perimeter.

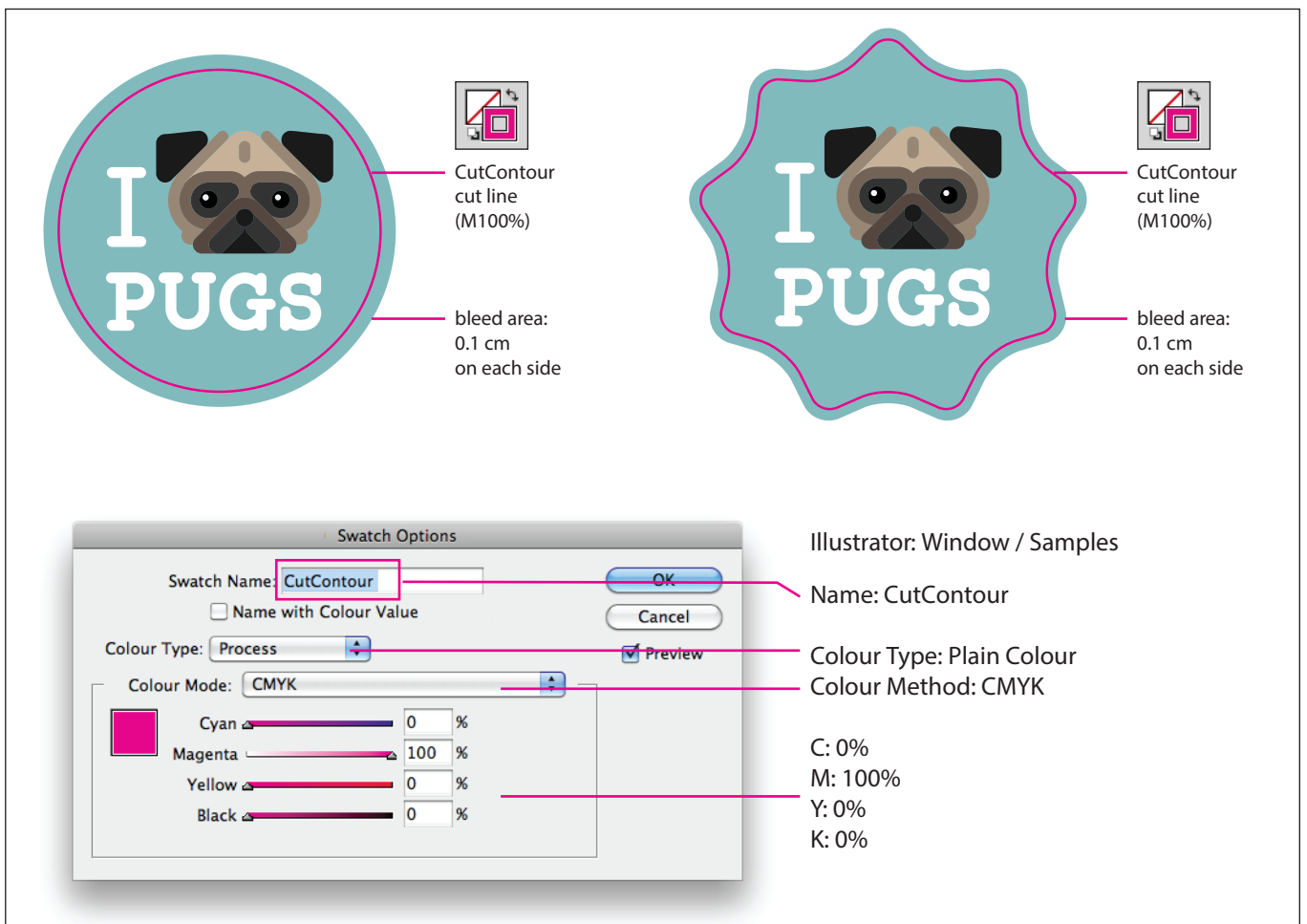
7 MARGINS AND BLEED AREA

PVC requires a PDF file in 1:1 scale +1 mm bleed area on each side.
Distance of texts from cutting border must be 3 mm.



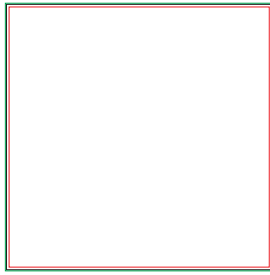
8 SHAPING

For a shaped cut, the file must be saved as a PDF containing the artwork and the cut line, which must be a vector path on a separate layer named CutContour (even if the cut is circular), you will need to assign pure magenta (M100% only). The artwork must always have a bleed of 1 mm beyond the CutContour cut line. Finally, we would advise against creating overly complex shapes, as this could lead to an imprecise, non-uniform cut.

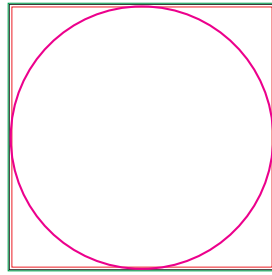


NB: shaped cut to shape adhesive PVC

Always follow these steps:



DOWNLOAD THE TEMPLATE
or create file



CREATE THE
CutContour



INSERT YOUR ARTWORK

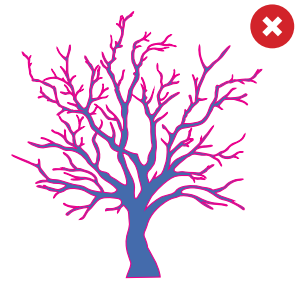
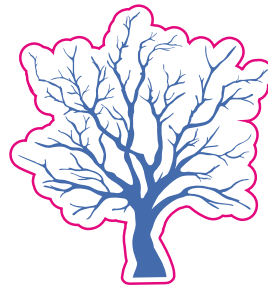


DELETE ALL LINES
except the CutContour



SAVE THE
PDF

Do not create overly complex shapes



The vector graphic CutContour line must be a single, unbroken line. Multiple, separate lines within the same file will not be cut.

